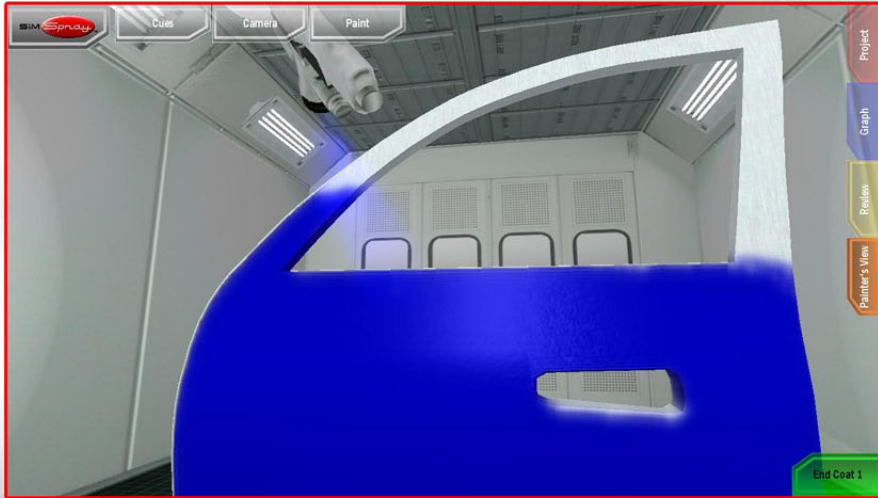


SIM Spray™



SimSpray™ is an immersive virtual reality painting simulation. Designed to augment traditional educational methods, it assists in the teaching of spray painting and coating fundamentals. Using SimSpray saves on training time and decreases expenses, delivering a "Green" ROI to training organizations.

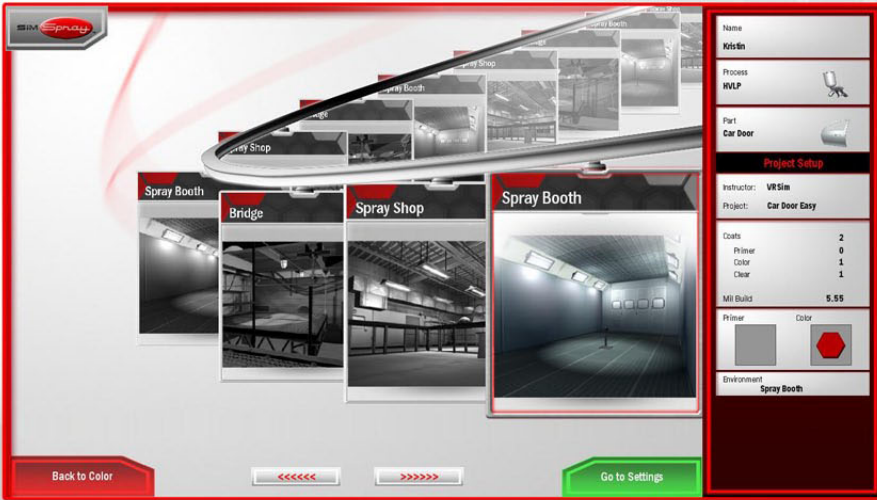
SimSpray Features:

- Experience realistic 3D stereoscopic spray paint simulation
- Learn correct body positioning and movement for proper painting and coating techniques
- Reinforce proper equipment setup
- Paint entire parts with primer, color, and clear coats
- See visual defects including:
 - Dry spray
 - Orange peel
 - Drips/sags
- Accelerate learning through innovative scoring and feedback
- Spray paint with a proprietary gun that includes:
 - Working fan pattern and fluid adjustment knobs, with horizontal or vertical spray cone orientation
 - Two-part trigger
 - Haptic feedback



SIM Spray™

FOR THE STUDENT



Experience painting in one of our immersive virtual reality environments:

- Spray booth
- Spray shop
- Bridge *
- Overhead conveyor line *

* Industrial Version



Compete with your friends. Get the best score per coat in:

- Transfer efficiency
- Mil build
- Angle, distance, speed
- Overall score
- Cumulative score for the entire project

Visual cues augment training by providing realtime feedback for:

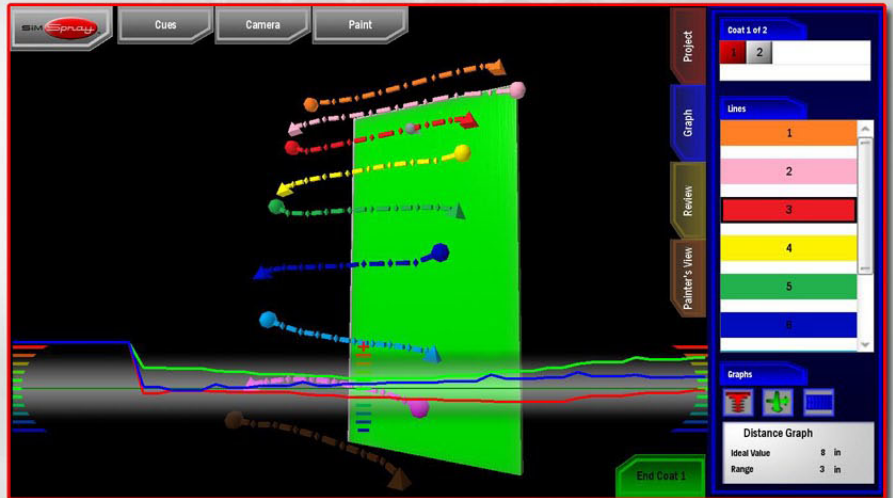
- Standoff distance
- Travel angle
- Travel speed



FOR THE INSTRUCTOR

SimSpray graphs allow instructors and students to see:

- The direction of travel
- The travel speed
- Detailed views of:
 - Travel angle
 - Speed
 - Distance



Track student performance with objective measures of:

- Travel angle
- Travel speed
- Standoff distance
- Transfer efficiency
- Mil build
- Overall score



Highlight visual defects:

- Orange peel
- Dry spray
- Drips

Instructors can teach with standard or custom projects.

Customizations include:

- Number and type of coating (primer, color, clear)
- Correct equipment settings
- Mil build for each coat
- Varied degree of difficulty

FOR THE ADMINISTRATOR

SimSpray Features:

- HVLP, Airless, and Air-Assisted Airless (Airless and Air-Assisted Airless in Industrial)
- A wide variety of practice parts including automotive, industrial, and structural
- Multiple immersive environments to simulate the painting experience
- Multi-coat capabilities
- Paintometer to quantify cost savings

A variety of support and upgrade packages are available for each system, as well as onsite installation and training. Contact us for more information.

| Total | |
|-----------------------|-----------|
| Simulation Time | 3:16:1:43 |
| Paint Total Time: | 0:1:5:29 |
| Paint Total Applied: | 169.9 oz |
| Paint Total Wasted: | 220.0 oz |
| Total Objects Painted | 17 |
| VOC Emissions (lbs) | 00.0000 |

| Trip | | Reset |
|-----------------------|-----------|-------|
| Simulation Time | 3:16:1:43 | |
| Paint Total Time: | 0:1:5:29 | |
| Paint Total Applied: | 169.9 oz | |
| Paint Total Wasted: | 220.0 oz | |
| Total Objects Painted | 17 | |
| VOC Emissions (lbs) | 00.0000 | |

- ✓ Reduces training time
- ✓ Decreases material and energy costs
- ✓ Eliminates environmental impacts
- ✓ Makes training fun

VRSim creates virtual reality training systems designed to enhance basic skills training for education and research groups, industrial trades, and military and defense organizations.

VRSim produces training systems that are easy to use, fully-immersive, and provide a meaningful learning experience.