

Stereoscopic Total Solution Global Company



R&D



HARDWARE



redROVER



CONTENTS



SOFTWARE



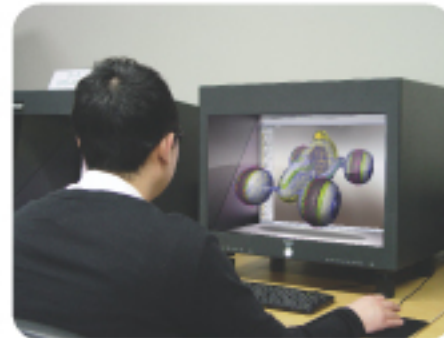
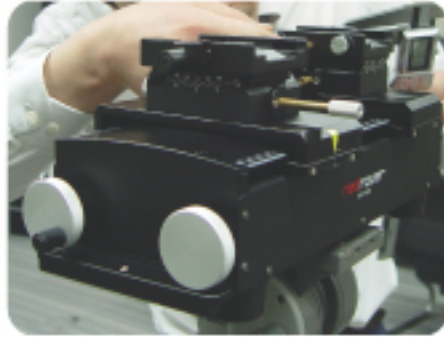
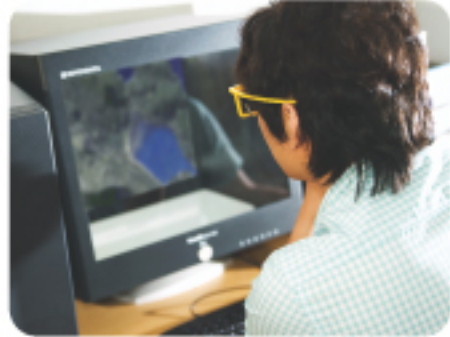
About Redrover

Redrover is a new generation of global contents business providing cutting edge 3D stereoscopic technology. Redrover's three major business sections include hardware system, software, and contents business. Redrover is a leader in the global community with branch offices in several countries that cover financing & funding, main production of animation, and licensing & merchandising. Toonbox Entertainment located in Toronto is primarily in charge of contents development and preproduction as well as international marketing and sales. Redrover Japan has been created to focus on the animation industry in Japan.

Our first project, the comical 3D animation TV series "Bolts & Blip", that is scheduled to air in the spring of 2010 across the world, has gained a great deal of global interest from major broadcasters and distributors. Other feature film projects, "Nut Job", "The Tortoise, The Rabbit and the Frog" and others, are in the development stage. Redrover's future holds many exciting and unique animation projects based on imaginative visions of our creative staff.



R&D Center



- Redrover's core driving power which encourages continuous development of technology and expansion of the market
- Developing technology by catching the needs through interactive communication with 3D market
- Development of 3D system, software, contents related technology based on the world's best resolution technology

R&D Sector



[Beamsplitter based Rig]

Through sophisticated process and use of precision machinery, camera league that enables stable and accurate 3D filming and helps 3D setting in automation was developed Conducting research and development to improve quality and simplify the use through actual field test.



[Dual Engine Single Projector]

Development of display device which lets a group of people to simultaneously view the 3D image. In addition, we are expanding into 3D projector market by thorough research and development on an integrated projector which is smaller in volume than the existing product.



[3D Medical system]

Machinery crucial in training professional medical teams and attaining necessary technology. Conducting research and development to film actual operation process of each medical team and enabling this video to be used in education or seminars.



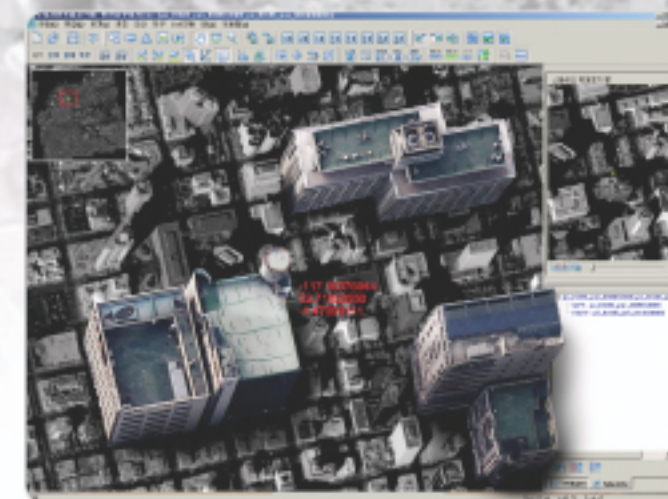
[3D Stereoscopic Monitor]

Research and development of 3D monitor equipped with two LCD panels rather than ordinary 2D monitor making distinctive difference with other 3D monitors in the quality of resolution. Research and development of 3D monitor that can be used not only in GIS, but also in 3D broadcasting

Redrover's core power of growth and hub of every developments

- Redrover's R&D center has been acknowledged globally as a leader for its actualization of core technology needed for 3D display and success in producing and commercializing various types of device realizing 3D contents. Based on our own research and development system, we are inputting all our efforts to bring forth new generational technology. We also strive to study effectiveness of 3D and upgrade the quality of our products. To become a company that initiates advancement in 3D Display market, we are extending our arena to 3D display, live filming, and development of medical equipments, and other sectors that require the use of 3D technology.

GIS NEW STANDARD FOR NEXT-GENERATION GIS STEREOSCOPIC 3D Display



• Software Compatability



New Standard for Next-Generation GIS Stereoscopic 3D Display

- A 3D monitor system that can perfectly replace existing CRT monitor in digital drawing. It can run GIS software which has its base on Quad-buffered OpenGL source
- Providing the best suitable environment for the user by minimizing flickering especially in situations where one has to work for a long time to draw digitally, and by providing good resolutions.
- Richer impression of color and clearer outlines allow for depth and precision of the image and being a Passive type, equipping light polarized lens, tiredness in the eyes is minimized.

* Specifications are subject to change without notice.

True3Di



▲ Push of a button, users can change between 2D and 3D



8"
HD-SDI



8 HD-SDI Back

SPECIFICATION **SDM-080 SDI**

• Resolution	800 x 480 (WVGA)
• Aspect ratio	16 : 9
• Active Display area (mm, typ)	176.64(H) x 99.36(V)
• Pixel Pitch (mm)	0.2280(H) x 0.2070(V)
• Brightness (through glasses)	400cd/m ²
• Contrast Ratio(typ.)	400:1
• Color number	262k
• Refresh rate (Hz)	60
• Response Time (ms)	10
• Viewing angle (U/D)	40/50
• Viewing angle (L/R)	60/60
• Dimensions (WxHxD)mm	231 x 211.1 x 204.8
• Dimensions (WxHxD)mm	231 x 211.1 x 324.8
• Polarized method	Linear polarization
• Input Signal	DVI-D, SDI In, SDI Out
• Power	DC12V/3.5A
• Weight (Kg)	4.5

12"
HD-SDI



SPECIFICATION **SDM-120 SDI**

• Resolution	1200 x 800 (WXGA)
• Aspect ratio	16 : 10
• Active Display area (mm, typ)	261.12(H) x 163.2(V)
• Pixel Pitch (mm)	0.204(H) x 0.204(V)
• Brightness (through glasses)	600cd/m ²
• Contrast Ratio(typ.)	400:1
• Color number	2624/M
• Refresh rate (Hz)	60
• Response Time (ms)	10
• Viewing angle (U/D)	60/60
• Viewing angle (L/R)	60/60
• Dimensions (WxHxD)mm	311 x 280 x 275
• Dimensions (WxHxD)mm	311 x 280 x 394
• Polarized method	Linear polarization
• Input Signal	DVI-D, SDI In, SDI Out
• Power	DC12V/4.16A
• Weight (Kg)	8

24"
HD-SDI



24 HD-SDI Back

SPECIFICATION **SDM-240 SDI**

• Resolution	1920 x 1200 (WUXGA)
• Aspect ratio	16 : 10
• Active Display area (mm, typ)	518.4(H) x 374.0(V)
• Pixel Pitch (mm)	0.270(H) x 0.270(V)
• Brightness (through glasses)	400cd/m ²
• Contrast Ratio(typ.)	1000:1
• Color number	16.7M
• Refresh rate (Hz)	60
• Response Time (ms)	5
• Viewing angle (U/D)	80/80
• Viewing angle (L/R)	80/80
• Dimensions (WxHxD)mm	636 x 530 x 502
• Polarized method	Linear polarization
• Input Signal	Composite, S-Video, Component AnalogRGB, DVI, HDMI, HD-SDI
• Power	AC100-240V 50-60Hz
• Weight (Kg)	33.5

Stereoscopic 3D Monitor

size of Display : 8", 12", 19", 22", 24", 40", HD-SDI 8", 12", 24"

- Plug and Display - True 3Di 3D monitor, which adopts a unique method of using 2 LCD panels, is able to support Plug and Display which does not require the use of extra image processing devices unlike flat type 3D monitors.
- Stability - True3Di 3D monitor eliminates flickering. This minimizes tiredness in the eyes one might get from observing 3D images for a long period of time.
- Clarity - AR coated window and Cubic structure prevents reflection of light from the surrounding which allows for clearer and vivid display of image.

* Specifications are subject to change without notice.

STEREOSCOPIC 3D MONITOR for specialists

8"



19"



22"



24"



40"



SPECIFICATION SDM-080

• Resolution	800 x 480 (WVGA)
• Aspect ratio	16 : 9
• Active Display area (mm, typ)	176.64(H) x 99.36(V)
• Pixel Pitch (mm)	0.2280(H) x 0.2070(V)
• Brightness (through glasses)	400cd/m ²
• Contrast Ratio(typ.)	400:1
• Color number	262k
• Refresh rate (Hz)	60
• Response Time (ms)	10
• Viewing angle (U/D)	40/50
• Viewing angle (L/R)	60/80
• Dimensions (WxHxD)mm	231 x 211.1 x 204.8
• Dimensions (WxHxD)mm	231 x 211.1 x 324.8
• Polarized method	Linear polarization
• Input Signal	DVI-D, Component, Composite
• Power	DC12V/3.5A
• Weight (Kg)	4.5

SPECIFICATION SDM-190M

• Resolution	1280 x 1024 (SXGA)
• Aspect ratio	5 : 4
• Active Display area (mm, typ)	376.32(H) x 301.056(V)
• Pixel Pitch (mm)	0.294(H) x 0.294(V)
• Brightness (through glasses)	250cd/m ²
• Contrast Ratio(typ.)	1000:1
• Color number	16.7M
• Refresh rate (Hz)	60
• Response Time (ms)	5
• Viewing angle (U/D)	80/80
• Viewing angle (L/R)	80/80
• Dimensions (WxHxD)mm	452 x 467 x 418
• Polarized method	Linear polarization
• Input Signal	Analog RGB, DVI
• Power	DC12V/4.16A x 2
• Weight (Kg)	30

SPECIFICATION SDM-220

• Resolution	1680 x 1050 (WSXGA+)
• Aspect ratio	16 : 10
• Active Display area (mm, typ)	473.76(H) x 296.1(V)
• Pixel Pitch (mm)	0.282(H) x 0.282(V)
• Brightness (through glasses)	250cd/m ²
• Contrast Ratio(typ.)	1000:1
• Color number	16.7M
• Refresh rate (Hz)	60
• Response Time (ms)	5
• Viewing angle (U/D)	80/80
• Viewing angle (L/R)	80/80
• Dimensions (WxHxD)mm	538 x 448 x 422
• Polarized method	Linear polarization
• Input Signal	Analog RGB, DVI
• Power	DC12V/5A x 2
• Weight (Kg)	34

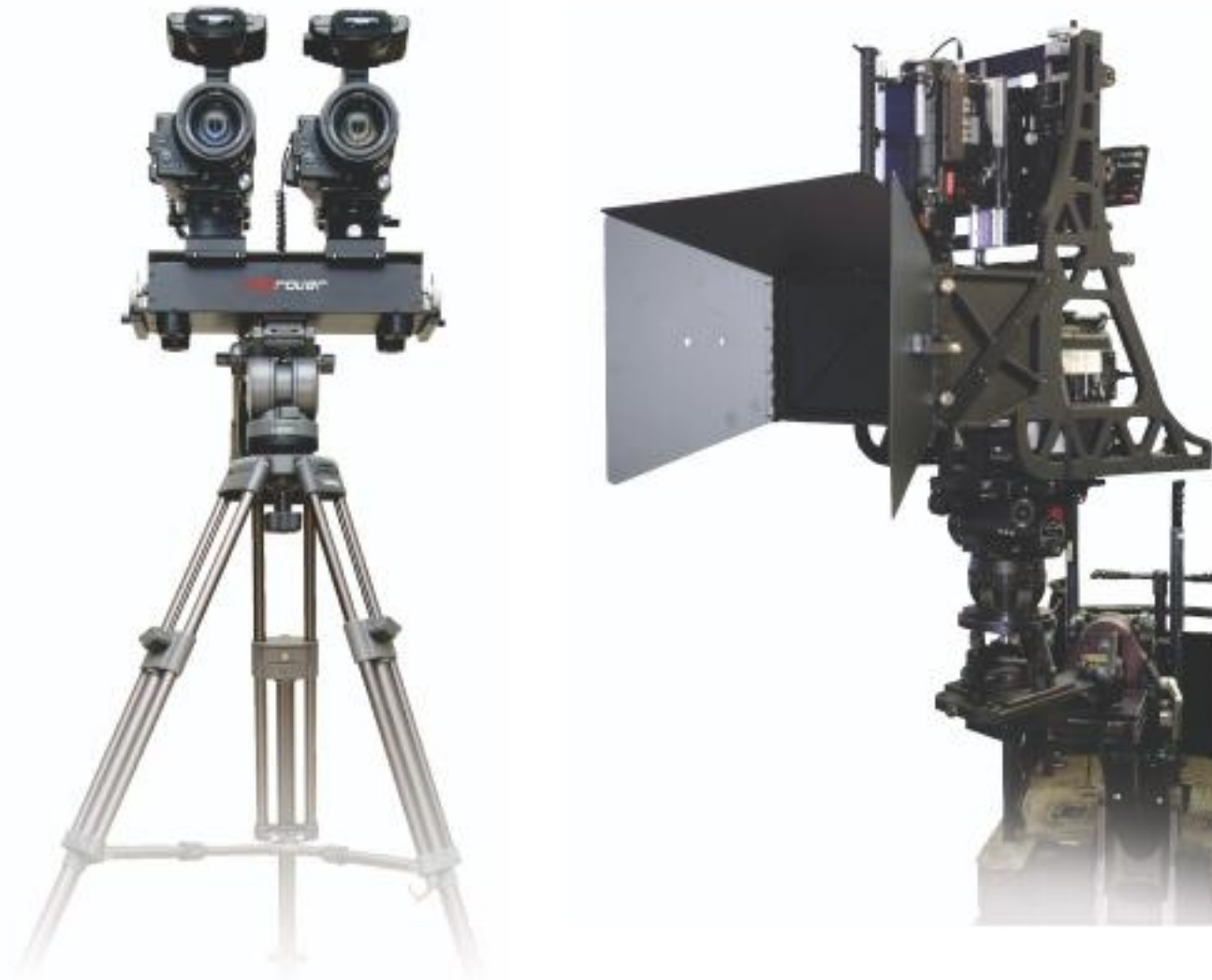
SPECIFICATION SDM-240

• Resolution	1920 x 1200 (WUXGA)
• Aspect ratio	16 : 10
• Active Display area (mm, typ)	518.4(H) x 324.0(V)
• Pixel Pitch (mm)	0.270(H) x 0.270(V)
• Brightness (through glasses)	400cd/m ²
• Contrast Ratio(typ.)	1000:1
• Color number	16.7M
• Refresh rate (Hz)	60
• Response Time (ms)	5
• Viewing angle (U/D)	80/80
• Viewing angle (L/R)	80/80
• Dimensions (WxHxD)mm	638 x 530 x 502
• Polarized method	Linear polarization
• Input Signal	Analog RGB, DVI, S-Video, Component
• Power	AC100-240V 50-60Hz
• Weight (Kg)	33.5

SPECIFICATION SDM-400

• Resolution	1920 x 1080 (WUXGA)
• Aspect ratio	16 : 9
• Active Display area (mm, typ)	885.6(H) x 498.15(V)
• Pixel Pitch (mm)	0.461(H) x 0.461(V)
• Brightness (through glasses)	500cd/m ²
• Contrast Ratio(typ.)	3000:1
• Color number	16.7M
• Refresh rate (Hz)	60
• Response Time (ms)	8
• Viewing angle (U/D)	89/89
• Viewing angle (L/R)	89/89
• Dimensions (WxHxD)mm	1042 x 746 x 745
• Polarized method	Linear polarization
• Input Signal	Analog RGB, DVI, S-Video, Component
• Power	AC100-240V 50-60Hz
• Weight (Kg)	80

STEREOSCOPIC 3D CAMERA DOCKING STATION



System Features

- Attempts in shooting dimensionally from 2D to 3D and film production
- Actualize dimensional filming of an object easily
- Dramatic cost reduction and timesaving to dimensionally film the object
- Selection of 8" 3D monitor to check the dimensions at the spot
- Patents acquired

System Composition

Stereoscopic 3D Camera Docking Station (SDC-M200)



Stereoscopic 3D View Finder
SDM-080



Stereoscopic 3D View Finder
SDM-120 SDI



Stereoscopic 3D Camera Docking Station

- Redrover RIG provides high level of precision by employing special components. Moreover, through our patented simultaneous control function of Binocular Disparity and Vergence, and Goniometer Distribution method, the users are able to experience easy and quick arrangement of camera and convenient photographing.
- To respond promptly and lead in the fast growing 3D filming and 3D contents market, we produce and commercialize multi-functional RIG systems.

* Specifications are subject to change without notice.

Full HD 3D STEREOGRAPHIC Filming Solution



- SI-2K MINI**
DIGITAL CINEMA CAMERA
- 2K 3D compliant resolution
 - 11 stops dynamic range
 - Variable frame rates
 - Digital Thermal conductivity
 - Modular, rugged design
 - Universal lens mount



- SiliconDVR**
DIGITAL RECORDING SOFTWARE
- Naturally intuitive touchscreen interface
 - Direct recording to Codestream™ in 2D/3D
 - IRIDAS color managed metadata pipeline
 - Integrated functions for shot matching
 - Instant review and playback through VTR interface
 - Full resolution, multi-monitor display and output

SPECIFICATION

- 2048 X 1152 Resolution
- 16:9 format 2/3" ± CMOS
- IRIDAS's color management technology



- SI-3D System**
STEREO 3D CAMERA SYSTEM
- 2K DCI & HD Raw Stereo Recording & Playback
 - 3D Visualizer (OSD, Side-by-Side, etc.)
 - Dual Outputs: Beam-Splitter LCD or Live Projection
 - Manual Parallax Adjustment: 7 ft. to 17 ft. ± Relative
 - 10-Bit Uncompressed and Compressed Recording
 - Single or Dual Drive Independent Left/Right file



SPECIFICATION

- 2K DCI & HD
- Raw Stereo Recording & Playback
- 3D Visualization
- Dual Outputs
- Parallax Adjustment

• Easier and cheaper cost movie level 3D stereoscopic filming is available by using the Redrover's Rig system and TFT LCD 3D viewfinder.

• Redrover Co., Ltd. is a reseller of Silicon Imaging.

• Specifications are subject to change without notice.

STEREOSCOPIC 3D CAMERA RIG SYSTEM



SPECIFICATION

S-100

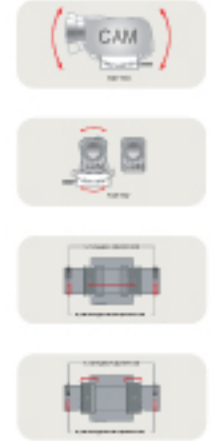
- Substrate AL6061, SPCC
- Minimum Movement (mm) 55mm(Depending on Cameras)
- Maximum Movement (mm) 80mm(Depending on Cameras)
- Camera Angle 5°
- Dimensions (WxDxH)mm 180 x 85 x 65
- Weight (Kg) 1.5
- Compatible Cameras Panasonic HCK10 and Similar Lines



SPECIFICATION

S-200

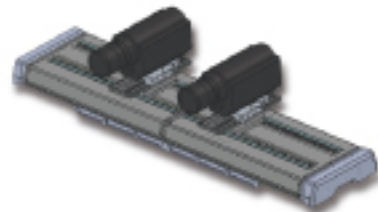
- Substrate AL6061, SPCC
- Minimum Movement (mm) 100mm(Depending on Cameras)
- Maximum Movement (mm) 290mm(Depending on Cameras)
- Camera Angle 10°
- Dimensions (WxDxH)mm 406 x 190 x 141
- Weight (Kg) 5.5
- Compatible Cameras Sony F900R and Similar Lines, Canon, JVC, Redone



SPECIFICATION

S-300A

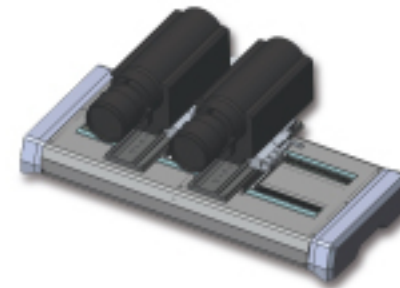
- Substrate AL6061, SUS304, SCM415H SPCC
- Minimum Movement (mm) 100mm(Depending on Cameras)
- Maximum Movement (mm) 290mm(Depending on Cameras)
- Camera Angle 15°
- Dimensions (WxDxH)mm 526 x 325 x 146
- Weight (Kg) 15
- Compatible Cameras Sony F900R and Similar Lines, Canon, JVC, Redone



SPECIFICATION

S-500LA

- Substrate AL6061, SUS304
- Minimum Movement (mm) 140mm(depend on camera)
- Maximum Movement (mm) 1000mm(depend on camera)
- Camera Angle 10°
- Dimensions (WxDxH)mm 1360x325x165
- Weight (Kg) 25



SPECIFICATION

S-500NA

- Substrate AL6061, SUS304
- Minimum Movement (mm) 140mm(Depending on camera)
- Maximum Movement (mm) 450mm(Depending on Cameras)
- Camera Angle 10°
- Dimensions (WxDxH)mm 750 x 320 x 145
- Weight (Kg) 17



SPECIFICATION

M-500

- Substrate AL6061, SUS304, SCM415H SPCC Compound
- Lens 0-70mm
- Alignment 1 sets of Goniometer Side by side
- Camera Angle 10°
- Camera Z-Axis angle ±10° / ±15°
- Dimensions (mm (WxDxH)) 700(962) x 468(790) x 796(806)Hood included
- Weight (Kg) 40
- Compatible Cameras HDW-F900R, Redone, PMW-EX3



SPECIFICATION

SP-031

• Device	0.7" (diagonal) DLPe, chip 4:3
• Lamp	Dual Lamp System
• Brightness	4,000 Ansi ~ 5,000 Ansi
• Contrast ratio	1,600:1 (full on/full off. (Contrast mode : high)
• Resolution	1,024 x 768 Pixels, 1,920 x 1,080 Pixels
• Lens	Powered zoom/focus lens
• lens Shift	Vertical(powered), horizontal(manual)
• Component Signal	480i, 480p, 720/60p, 1080/60i
• Video Signal	DVI-D, RGB, Component
• Keystone correction Range	±30° (with standard lens)
• Dimension(WxHxD)mm	541.6 x 356 x 523.8
• Weight(kg)	43



SPECIFICATION

SP-100

• 3D Superb Picture quality	Optical Method High Quality 3D Projector(Patents acquired) Single Lens Projector, Passive type SXRD 6 Panel (3RGB x 2) 2 x DLP World Top Class Brightness 2,500Ansi Full HD (1,920 x 1,080p), 60Hz Dual Engine Auto Picture Calibration
• Convenience	Advanced Keystone (H/V)
• Interface	HDMI (v1.3) x 3 RGB in x 1, Out x 1 RJ45(LAN Controller)

Stereoscopic 3D Projector System

- A 3D projector that outputs the image to a large-scaled screen. It is easy to adjust the focus with button without moving the body by the lens shift function.
- Energizing the bright image with 4,000 ansi illuminations. It is practical for use at the exhibitions, conference rooms and public schools

* Specifications are subject to change without notice.

STEREOSCOPIC SOFTWARE

3D Presentation software - stereoscopic PT

System Features

- Realtime Stereoscopic Rendering
- Stereoscopic Layer for 2D, 3D
- Realtime Depth Control
- Animation and Slideshow
- Easy Concept of Stereoscopic Contents
- Converting 2D presentation to 3D image
- Compatible current MS-PowerPoint program
- Patents acquired



Application Sector



[Education]

- Most accurate information transmission
- Maximizing educational effect quantitatively and qualitatively
- Inducing interest and enhancing concentration
- Fostering environment for expressive audio-visual education



[Office, Exhibition]

- Transmitting concentrated information to customers through visual 3D effect
- Application in meetings, demonstration of product, Product IR, Corporate IR, conventions, etc.



3D Stereoscopic Software

- Compatible current MS-PowerPoint program, it is easier to stereoscope PowerPoint document and by adding various dimensional animation functions, presentation effect can be maximized.
- This software easily converts 2D presentation to 3D expression

EDUCATIONAL SOLUTION



EDUCATIONAL SOLUTION

- Redrover's 3D educational solution is comprised of 3D projector(or 3D TV), silver screen(or monitor), and 3D microscope.
- This solution and stereo PowerPoint S/W that redrover developed could make public education more efficient.

* Specifications are subject to change without notice.

STEREOSCOPIC 3D Microscopic System



SPECIFICATION SDS-N101 Series

- Wide zooming range
- Undistorted and natural looking images
- High resolution and N.A. value of objective lenses
- 20 degree angled eyepiece tube
- Coaxial coarse / Fine Focusing
- Easy to use plain / Diascopic stand
- Epi-fluorescence Attachment
- Various illuminators can be applied
- Photomicrographic system, CCTV camera or Digital still camera can be attached



SPECIFICATION DM-84

- Total magnification : 7~45 times
- Ocular lens : WF 10X
- Objective lens : zoom 0.7X~4.5X
- Lights : attachable(60 bulbs LED light)
- High resolution ocular lens with a wide viewing angle for precise observation

Stereoscopic 3D Microscopic System

- By displaying 3D microscopic image on the 3D monitor, a group of people can observe the object with dimension.
- By using the 3D monitor which provides depth perception, tiredness due to uncomfortable posture one takes when looking at microscope can be eliminated.

* Specifications are subject to change without notice.

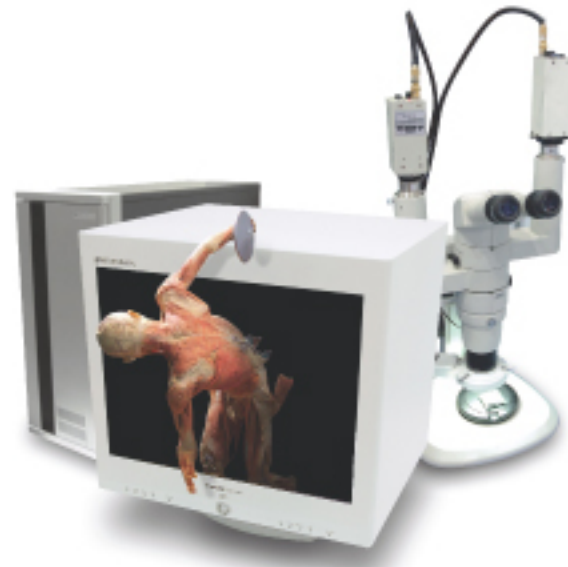


MEDICAL SOLUTION

- Redrover's 3D medical solution could achieve real time display and record of the same images as surgeon look through by surgical microscope equipped two CCD cameras for capturing 3D images.

* Specifications are subject to change without notice.

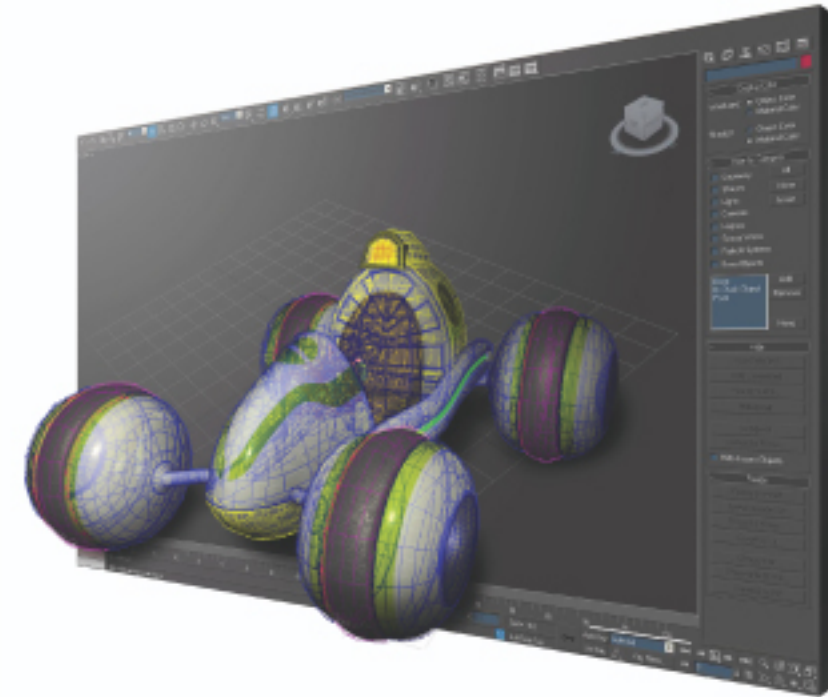
3D Medical care software



[SIDP]

- Real time play and saving software for 3D image
- Software that plays and saves real time 3D image enlarged from dimensional microscope
- Saving 3D still image, Playing real time 3D image, Slideshow of Still image

3D Presentation software



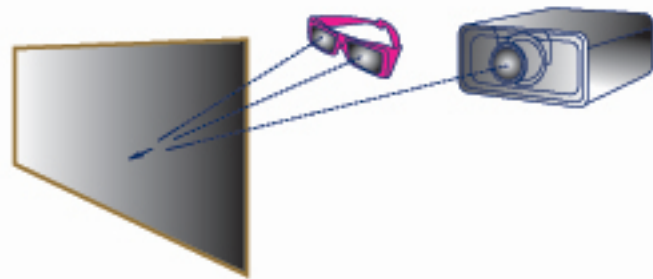
[True 3D MAX]

- Stereoscopic Plug-in Software Existing Product Modeling CAD Program
- A plug-in software interworking with image creation software MAX and Maya
- Extension of existing functions in the program to view the object dimensionally which enables more detailed production of contents
- In MAX and Maya, a function to conveniently recreate the object into 3D image is provided



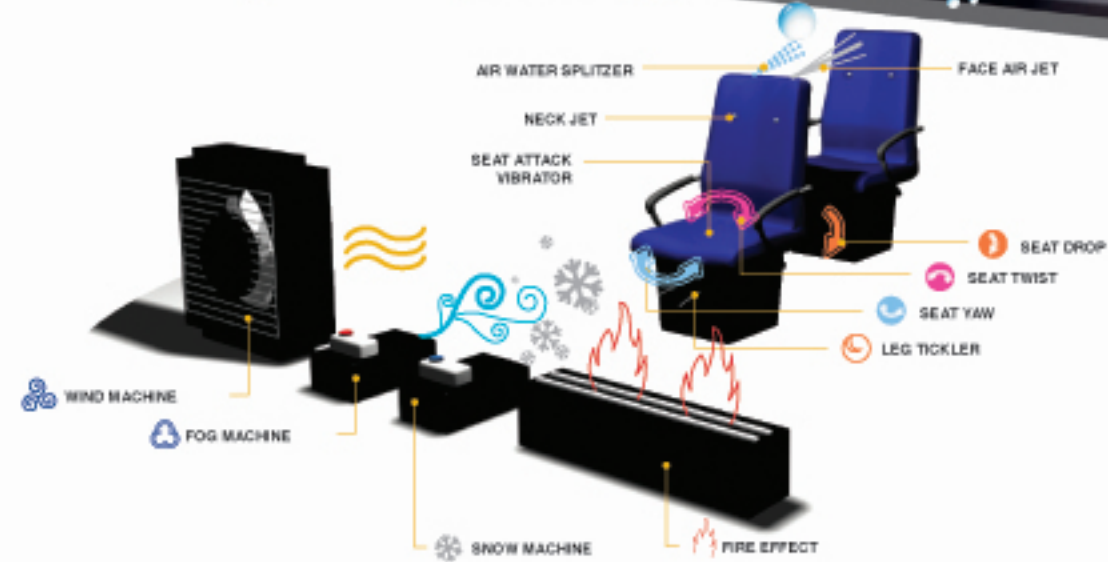
[SMPlayer]

- Software that plays various types of 3D image contents
- Supports various types of format such as Anaglyph, Micropol, Dual Display



3D Theatre

- Images that filmed by stereoscopic camera or produced by CG are materializing through polarization glasses or shutter glasses.



4D Theatre

- Building 4D theatre is the latest trend in recently designed exhibition centers for special purposes. In order that 4D theaters are more conveyable than 3D theatres.



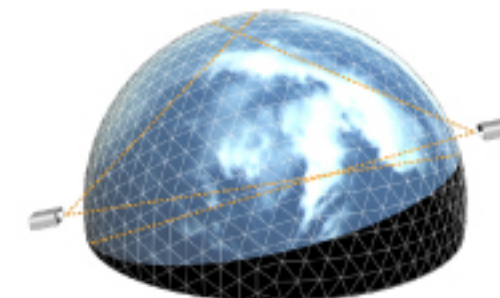
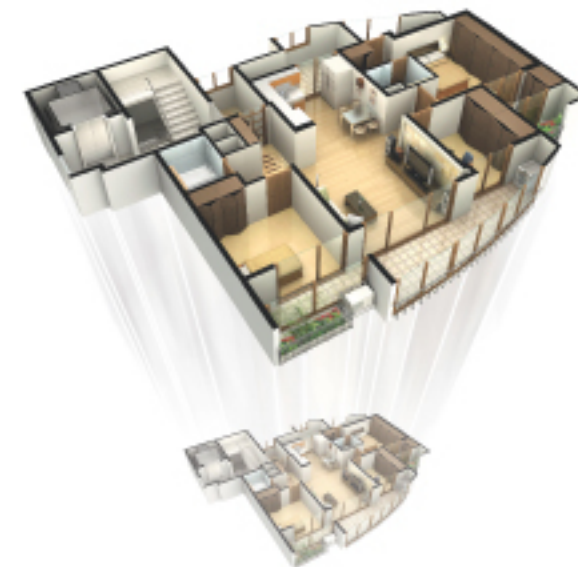
Production of 3D/4D stereoscopic special image contents

- Produce special 3D stereoscopic image contents of museum, exhibition center, and expo.



3D stereoscopic architecture related VR

- Demonstration of existing VR by stereoscopic image increases the concentration to images and offers prompt comprehension and interests.



- Dorm screen stereoscopic method of lower expenses



CONVERT



Convert existing images for demonstration

Easy to change the image, lower rental cost

3D stereoscopic dorm theatre

- A budget construction is available by using a projector. Lower operating expenses and an epoch projecting stereoscopic method

CONTENTS - BOLTS&BLIP/THE NUT JOB



TITLE: BOLTS & BLIP

- Genre:Comic Action Adventure
- Target Demographic:Family
- Full 3D Animation TV Series (26Eps x 22Mins)
- Full 3D Stereoscopic TV Series
- Stereoscopic Feature Film
- Blu-ray, HD DVD, Stereoscopic DVD

KEY CREATIVES

- Directed by Peter Lepeniotis & Tim Deacon
- Executive Producer:Hong Kim
- Written by Eric Trueheart
- Art Directors:Ian Hastings, Goran Delic & Don Gauthier
- Animation Director:Bruno Tacchino
- Co-Production:Redrover & Toonbox Entertainment
- Stereoscopic Animation Production:Redrover

SYNOPSIS

Bolts and Blip are two oddball best friend Civi-bots living on the Moon in a culture dominated by cool and athletic Battle-bots who play in the coveted Lunar League of Robotic Sports. When Bolts & Blip suddenly get drafted on to the last placed Thunderbolts team, the duo, along with their new found friends, has to match wits with the likes of The Iron Maidens, The Tread Heads, and the unstoppable Galaxy All-Stars, all while trying to fit in and make names for themselves in their new world.

Upcoming Project



The Tortoise, the Rabbit and The Frog



Snow White



Black Castle



Blast off



King Jackson



Fooble



Space Monkey



TITLE: THE NUT JOB

- Genre : Comic Adventure
- Target Demographic: Family
- 4D Stereoscopic Feature Film
- Blu-ray, Stereoscopic DVD

KEY CREATIVES

- Director : Peter Lepeniotis
- Art Director : Ian Hastings
- Co-Art Director : Goran Delic
- Executive Producer : Hong Kim
- Producer : Thom Chapman

SYNOPSIS

A down & out scoundrel Squirrel and Rat duo constantly try to outwit their local park animal community to attain food supremacy... often leading to ridiculous embarrassment when their schemes go wrong...

Winner Of 8 Festival Awards including NFB Audience Choice

- Best Animation:1st Action on Film International Film Festival 2005
- Best Score:1st Action on Film International Film Festival 2005
- People's Choice Award-Animation Theatre : 32nd SIGGRAPH Computer Animation Festival 2005
- Best Animation : 9th Rhode Island International Film Festival 2005
- NOMINATION Animated Comedy-Finalist : Dragon * Con Independent Short Film Festival 2005
- Public Prize : Ottawa International Animation Festival 2005
- Best Animation - Audience Award : 11th Palm Springs International Short Fest 2005
- Best Animation : 2nd Action on Film International Film Festival 2006

CONTENTS

- Redrover's Contents Marketing Division ranges over not only the distribution of the 3D animation projects and licensing & merchandising business worldwide, but also advertisement, promotion events and sponsorship marketing for the projects.

redrover

redrover Co., Ltd. Webpage: www.redrover.co.kr

3F, Bundang M Tower, 188 Gumi-dong Bundang-gu, Seongnam-city Gyeonggi-do, Korea. 463-870
Homepage. www.redrover.co.kr E-mail. webmaster@redrover.co.kr
Tel. +82-31-777-3211 Fax. +82-31-777-3212



Webpage: www.toonboxentertainment.com

True3Di

Webpage: www.true3di.com

redrover USA

Webpage: www.redrover.co.kr

redrover Japan

Webpage: www.redrover.jp

redrover China

Webpage: www.redrover.co.kr